

Wright County, Iowa
 Horizontal Datum: **NAD 83(NA2011)** - Vertical Datum: **NAVD 1988**
 Iowa State Plane North Zone (1401)
 Iowa Regional Coordinate System, Zone 4, Sioux City – Iowa Falls
 Units: US Survey Feet
05/27/2020

Point Name: **990056**

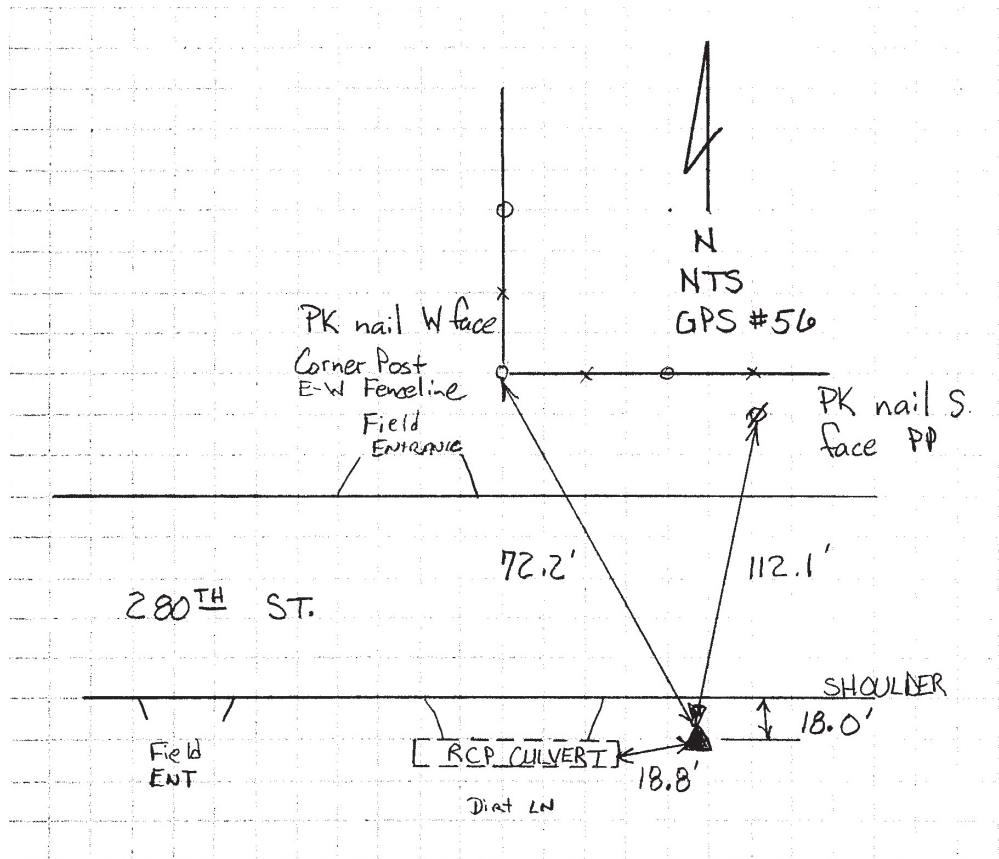
Designation: Wright County 0056 (set by V&K in 2004)

NAD 83(NA2011) Latitude: **N42°38'40.54141"** Longitude: **W93°33'28.06930"**
 NAVD 88 Ortho Height: **1164.014sft** Ellip. Ht: **1074.737sft** Geoid18

Iowa North Zone (1401) Northing: **3697955.517sft** Easting: **4905700.037sft**
 Mapping Angle: **-0°02'21.0"** Combination Scale Factor: **0.9998940796**

IaRCS Zone 4 Northing: **8643133.728sft** Easting: **14843197.697sft**
 Mapping Angle: **0°51'44.2"** Combination Scale Factor: **0.9999955057**

Monument Type: 5/8" diameter aluminum rod with a 2-1/2" dia. aluminum cap & permanent magnet encased in a 5" dia. PVC pipe with aluminum access cover.



This document was prepared by Dan Corbin, Inc. on May 25th, 2021 for Wright County, Iowa.