

Wright County, Iowa
Horizontal Datum: **NAD 83(NA2011)** - Vertical Datum: **NAVD 1988**
Iowa State Plane North Zone (1401)
Iowa Regional Coordinate System, Zone 4, Sioux City – Iowa Falls
Units: US Survey Feet
05/27/2020

Point Name: **990059**

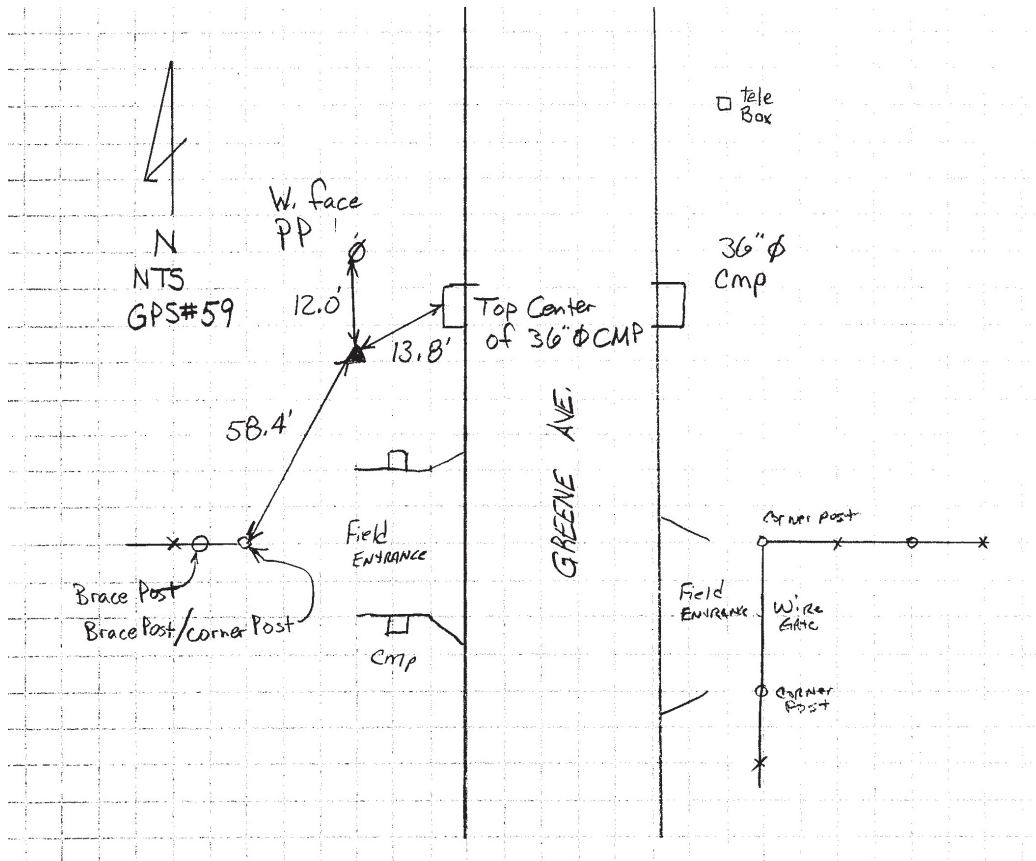
Designation: Wright County 0059 (set by V&K in 2004)

NAD 83(NA2011) Latitude: **N42°36'04.37226"** Longitude: **W93°51'12.38244"**
NAVD 88 Ortho Height: **1105.559sft** Ellip. Ht: **1016.173sft** Geoid18

Iowa North Zone (1401) Northing: **3682339.903sft** Easting: **4826093.262sft**
Mapping Angle: **-0°14'22.4"** Combination Scale Factor: **0.9998974672**

IaRCS Zone 4 Northing: **8626265.562sft** Easting: **14763838.548sft**
Mapping Angle: **0°39'44.7"** Combination Scale Factor: **0.9999971246**

Monument Type: 5/8" diameter aluminum rod with a 2-1/2" dia. aluminum cap & permanent magnet encased in a 5" dia. PVC pipe with aluminum access cover.



This document was prepared by Dan Corbin, Inc. on May 25th, 2021 for Wright County, Iowa.