

Wright County, Iowa
 Horizontal Datum: **NAD 83(NA2011)** - Vertical Datum: **NAVD 1988**
 Iowa State Plane North Zone (1401)
 Iowa Regional Coordinate System, Zone 4, Sioux City – Iowa Falls
 Units: US Survey Feet
05/27/2020

Point Name: **990063**

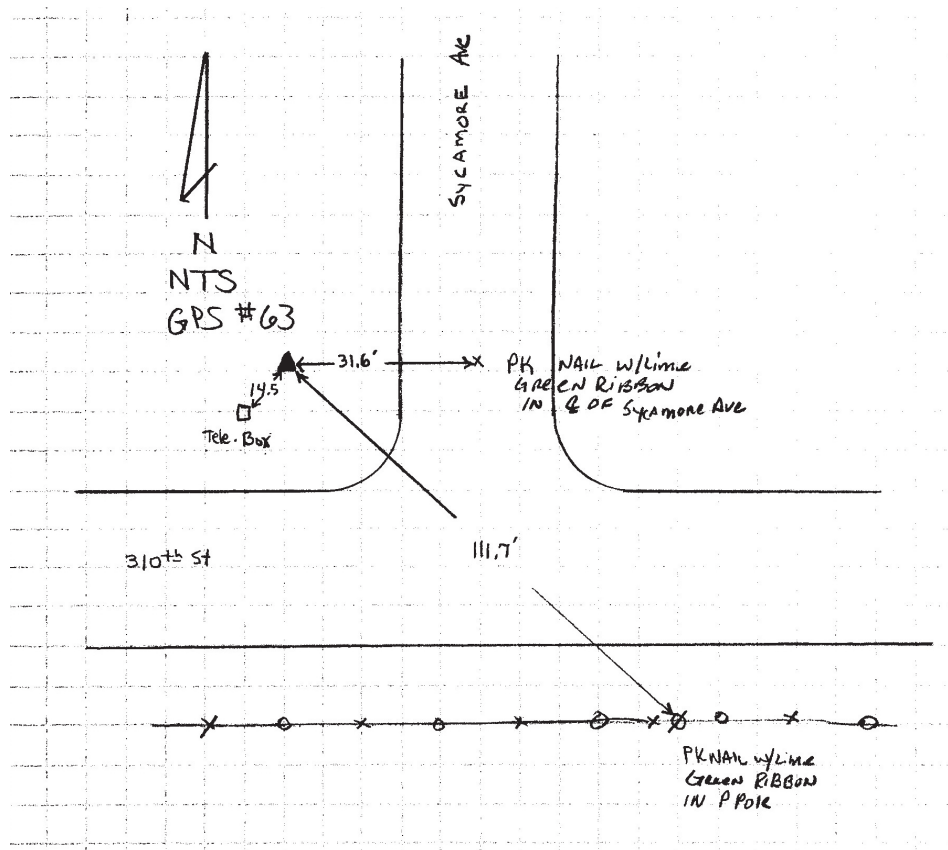
Designation: Wright County 0063 (set by V&K in 2004)

NAD 83(NA2011) Latitude: **N42°36'04.19437"** Longitude: **W93°37'03.17059"**
 NAVD 88 Ortho Height: **1237.594sft** Ellip. Ht: **1148.859sft** Geoid18

Iowa North Zone (1401) Northing: **3682144.981sft** Easting: **4889602.543sft**
 Mapping Angle: **-0°04'46.8"** Combination Scale Factor: **0.9998911265**

IaRCS Zone 4 Northing: **8627070.261sft** Easting: **14827349.360sft**
 Mapping Angle: **0°49'18.8"** Combination Scale Factor: **0.9999907812**

Monument Type: 5/8" diameter aluminum rod with a 2-1/2" dia. aluminum cap & permanent magnet encased in a 5" dia. PVC pipe with aluminum access cover.



This document was prepared by Dan Corbin, Inc. on May 25th, 2021 for Wright County, Iowa.