

Wright County, Iowa
Horizontal Datum: **NAD 83(NA2011)** - Vertical Datum: **NAVD 1988**
Iowa State Plane North Zone (1401)
Iowa Regional Coordinate System, Zone 4, Sioux City – Iowa Falls
Units: US Survey Feet
05/27/2020

Point Name: **990064**

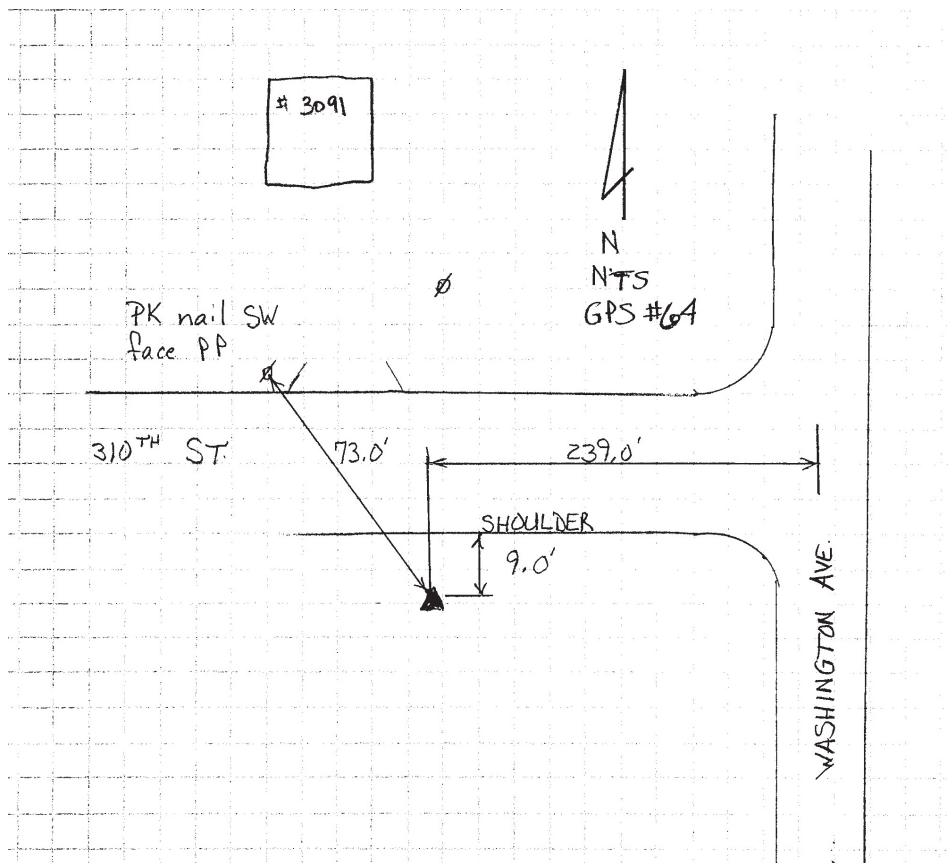
Designation: Wright County 0064 (set by V&K in 2004)

NAD 83(NA2011) Latitude: **N42°36'04.23692"** Longitude: **W93°33'33.57913"**
NAVD 88 Ortho Height: **1209.040sft** Ellip. Ht: **1119.786sft** Geoid18

Iowa North Zone (1401) Northing: **3682132.892sft** Easting: **4905277.158sft**
Mapping Angle: **-0°02'24.8"** Combination Scale Factor: **0.9998925157**

IaRCS Zone 4 Northing: **8627304.816sft** Easting: **14843023.787sft**
Mapping Angle: **0°51'40.5"** Combination Scale Factor: **0.9999921711**

Monument Type: 5/8" diameter aluminum rod with a 2-1/2" dia. aluminum cap & permanent magnet encased in a 5" dia. PVC pipe with aluminum access cover.



This document was prepared by Dan Corbin, Inc. on May 25th, 2021 for Wright County, Iowa.