

**Wright County, Iowa**  
 Horizontal Datum: **NAD 83(NA2011)** - Vertical Datum: **NAVD 1988**  
 Iowa State Plane North Zone (1401)  
 Iowa Regional Coordinate System, Zone 4, Sioux City – Iowa Falls  
 Units: US Survey Feet  
**05/27/2020**

Point Name: **990065**

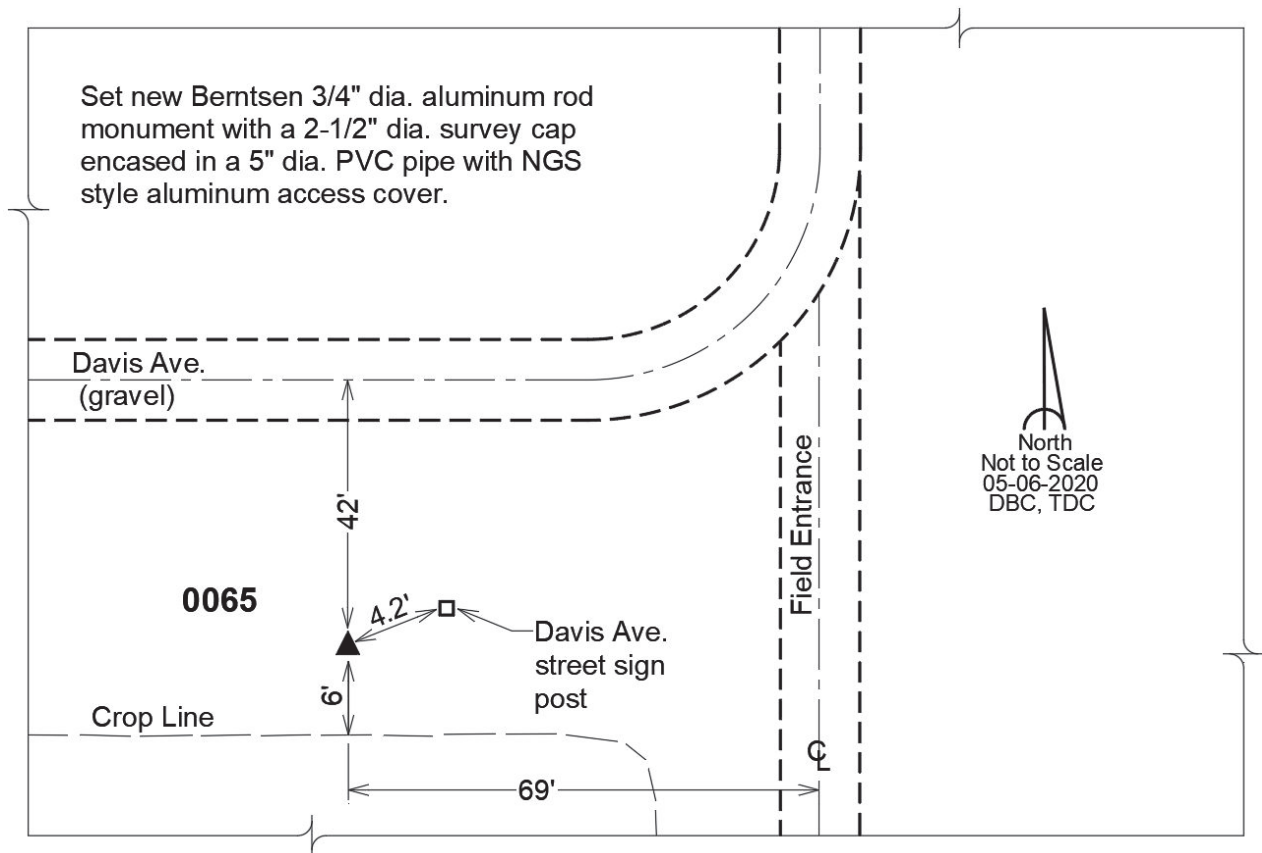
**Designation:** GPS Control Pt. 0065 (set by DCI in 2020)

NAD 83(NA2011) Latitude: **N42°38'40.62420"** Longitude: **W93°54'44.19016"**  
 NAVD 88 Ortho Height: **1095.071sft** Ellip. Ht: **1004.195sft** Geoid18

**Iowa North Zone (1401)** Northing: **3698229.047sft** Easting: **4810330.207sft**  
 Mapping Angle: **-0°16'45.9"** Combination Scale Factor: **0.9998974509**

**IaRCS Zone 4** Northing: **8641906.159sft** Easting: **14747825.700sft**  
 Mapping Angle: **0°37'21.6"** Combination Scale Factor: **0.9999988783**

**Monument Type:** 3/4" diameter aluminum rod with a 2-1/2" dia. aluminum cap & permanent magnet encased in a 5" dia. PVC pipe with aluminum access cover.



*This document was prepared by Dan Corbin, Inc. on May 25<sup>th</sup>, 2021 for Wright County, Iowa.*