

Wright County, Iowa
 Horizontal Datum: **NAD 83(NA2011)** - Vertical Datum: **NAVD 1988**
 Iowa State Plane North Zone (1401)
 Iowa Regional Coordinate System, Zone 4, Sioux City – Iowa Falls
 Units: US Survey Feet
05/27/2020

Point Name: **990066**

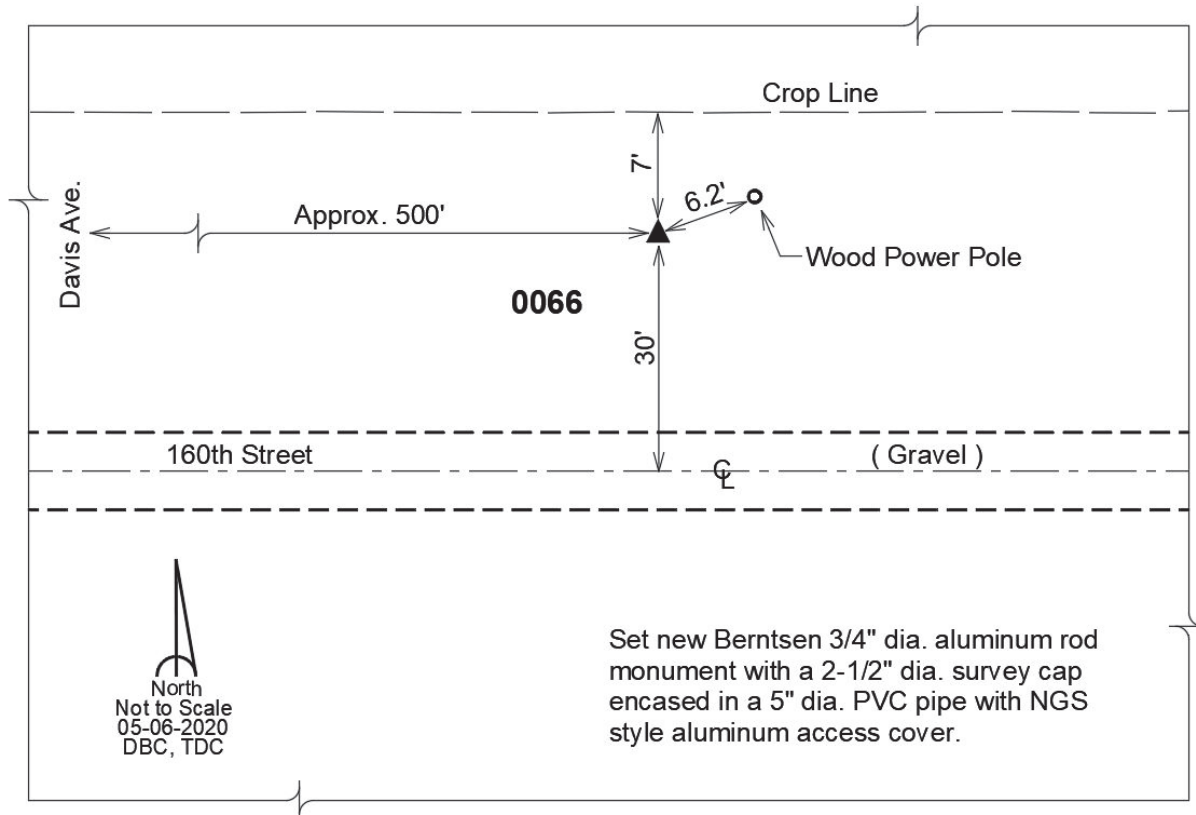
Designation: GPS Control Pt. 0066 (set by DCI in 2020)

NAD 83(NA2011) Latitude: **N42°49'11.22477"** Longitude: **W93°54'36.53862"**
 NAVD 88 Ortho Height: **1147.120sft** Ellip. Ht: **1052.307sft** Geoid18

Iowa North Zone (1401) Northing: **3762063.330sft** Easting: **4811211.750sft**
 Mapping Angle: **-0°16'40.7"** Combination Scale Factor: **0.9998985871**

IaRCS Zone 4 Northing: **8705753.113sft** Easting: **14747702.151sft**
 Mapping Angle: **0°37'26.7"** Combination Scale Factor: **1.0000071706**

Monument Type: 3/4" diameter aluminum rod with a 2-1/2" dia. aluminum cap & permanent magnet encased in a 5" dia. PVC pipe with aluminum access cover.



This document was prepared by Dan Corbin, Inc. on May 25th, 2021 for Wright County, Iowa.