

Wright County, Iowa
Horizontal Datum: **NAD 83(NA2011)** - Vertical Datum: **NAVD 1988**
Iowa State Plane North Zone (1401)
Iowa Regional Coordinate System, Zone 4, Sioux City – Iowa Falls
Units: US Survey Feet
05/27/2020

Point Name: **991045**

Designation: 97-045 Hancock County (set by ASI in 1997)

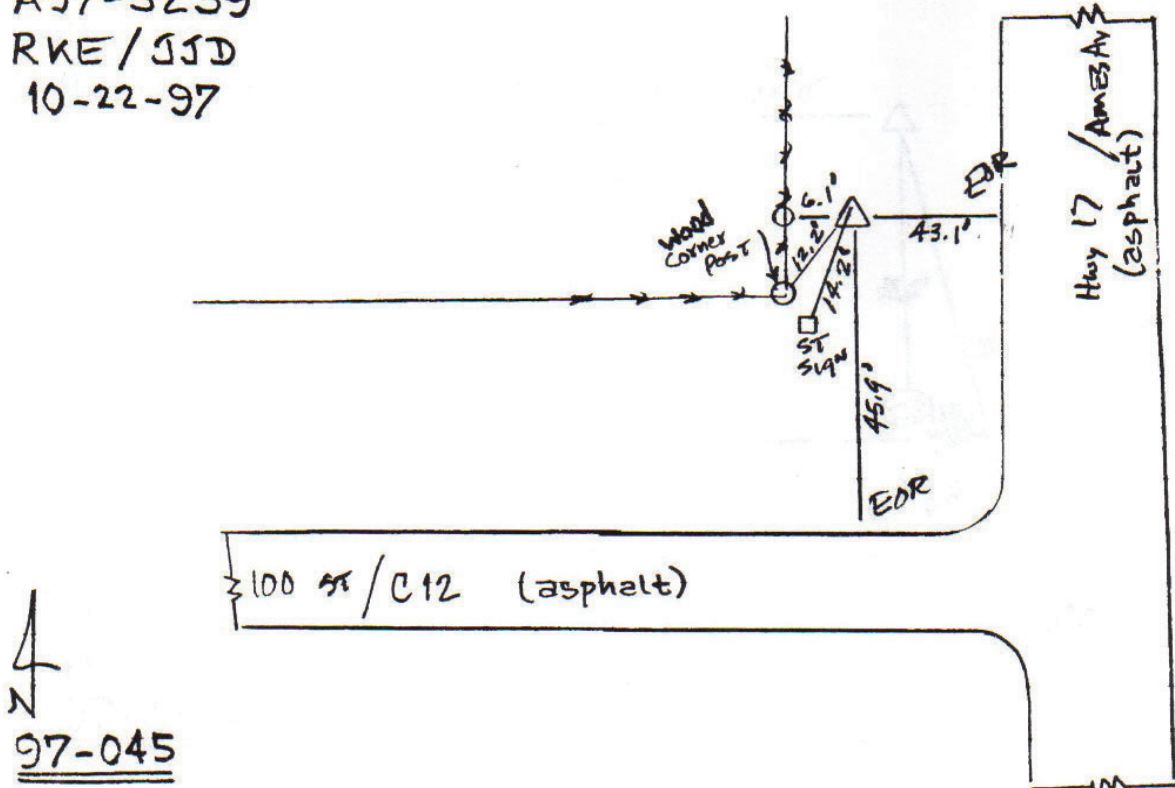
NAD 83(NA2011) Latitude: **N42°54'28.42191"** Longitude: **W93°58'17.16012"**
NAVD 88 Ortho Height: **1148.230sft** Ellip. Ht: **1052.048sft** Geoid18

Iowa North Zone (1401) Northing: **3794260.390sft** Easting: **4794949.281sft**
Mapping Angle: **-0°19'10.2"** Combination Scale Factor: **0.9999038548**

IaRCS Zone 4 Northing: **8737693.667sft** Easting: **14730932.927sft**
Mapping Angle: **0°34'57.6"** Combination Scale Factor: **1.0000160461**

Monument Type: 5/8" diameter aluminum rod with a 2-1/2" dia. aluminum cap & permanent magnet encased in a 5" dia. PVC pipe with aluminum access cover.

A97-5239
RKE/JJD
10-22-97



This document was prepared by Dan Corbin, Inc. on May 25th, 2021 for Wright County, Iowa.