

**Wright County, Iowa**  
 Horizontal Datum: **NAD 83(NA2011)** - Vertical Datum: **NAVD 1988**  
 Iowa State Plane North Zone (1401)  
 Iowa Regional Coordinate System, Zone 4, Sioux City – Iowa Falls  
 Units: US Survey Feet  
**05/27/2020**

Point Name: **991047**

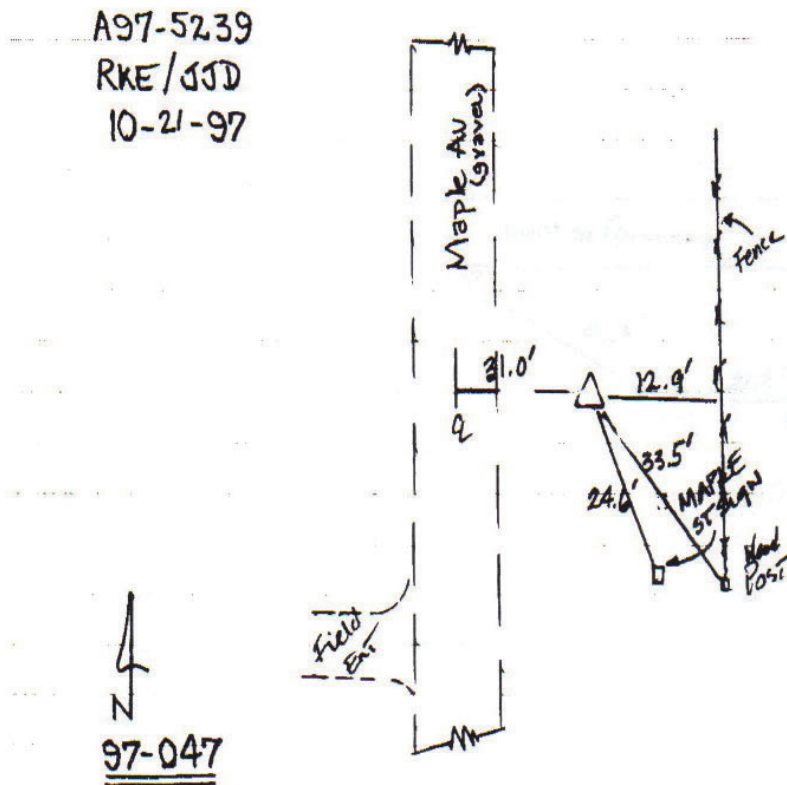
**Designation:** 97-047 Hancock County (set by ASI in 1997)

NAD 83(NA2011) Latitude: **N42°54'29.26257"** Longitude: **W93°44'02.37068"**  
 NAVD 88 Ortho Height: **1224.092sft** Ellip. Ht: **1129.412sft** Geoid18

**Iowa North Zone (1401)** Northing: **3794080.092sft** Easting: **4858561.726sft**  
 Mapping Angle: **-0°09'30.9"** Combination Scale Factor: **0.9999001744**

**IaRCS Zone 4** Northing: **8738514.848sft** Easting: **14794547.465sft**  
 Mapping Angle: **0°44'35.4"** Combination Scale Factor: **1.0000123749**

**Monument Type:** 5/8" diameter aluminum rod with a 2-1/2" dia. aluminum cap & permanent magnet encased in a 5" dia. PVC pipe with aluminum access cover.



*This document was prepared by Dan Corbin, Inc. on May 25<sup>th</sup>, 2021 for Wright County, Iowa.*