

Wright County, Iowa
 Horizontal Datum: **NAD 83(NA2011)** - Vertical Datum: **NAVD 1988**
 Iowa State Plane North Zone (1401)
 Iowa Regional Coordinate System, Zone 4, Sioux City – Iowa Falls
 Units: US Survey Feet
05/27/2020

Point Name: **991048**

Designation: 97-048 Hancock County (set by ASI in 1997)

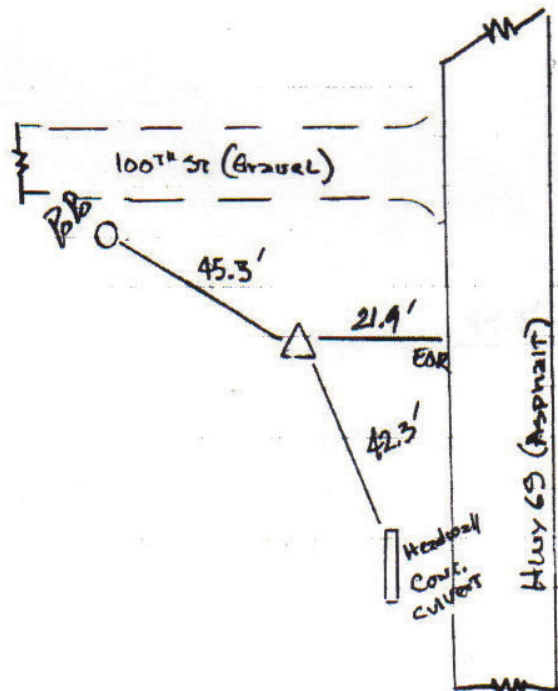
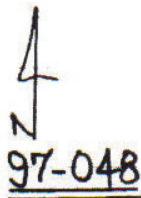
NAD 83(NA2011) Latitude: **N42°54'30.20442"** Longitude: **W93°37'00.02300"**
 NAVD 88 Ortho Height: **1227.644sft** Ellip. Ht: **1134.673sft** Geoid18

Iowa North Zone (1401) Northing: **3794110.256sft** Easting: **4889992.465sft**
 Mapping Angle: **-0°04'44.7"** Combination Scale Factor: **0.9998999421**

IaRCS Zone 4 Northing: **8739039.671sft** Easting: **14825977.364sft**
 Mapping Angle: **0°49'20.9"** Combination Scale Factor: **1.0000121533**

Monument Type: 5/8" diameter aluminum rod with a 2-1/2" dia. aluminum cap & permanent magnet encased in a 5" dia. PVC pipe with aluminum access cover.

A97-5239
 RKE/JJD
 10-21-97



This document was prepared by Dan Corbin, Inc. on May 25th, 2021 for Wright County, Iowa.