

Wright County, Iowa
Horizontal Datum: **NAD 83(NA2011)** - Vertical Datum: **NAVD 1988**
Iowa State Plane North Zone (1401)
Iowa Regional Coordinate System, Zone 4, Sioux City – Iowa Falls
Units: US Survey Feet
05/27/2020

Point Name: **991049**

Designation: 97-049 Hancock County (set by ASI in 1997)

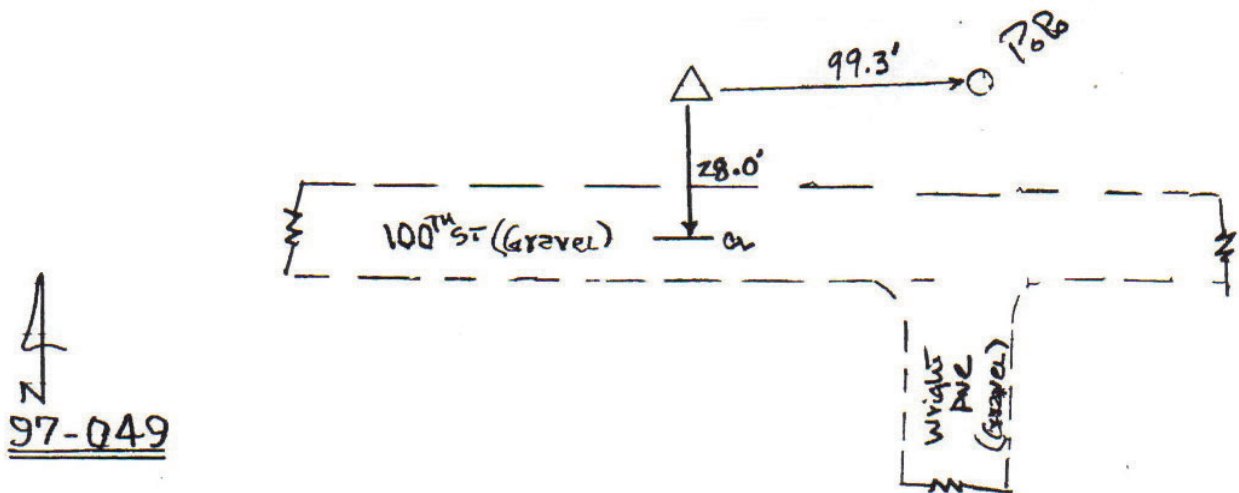
NAD 83(NA2011) Latitude: **N42°54'30.83946"** Longitude: **W93°29'56.52204"**
NAVD 88 Ortho Height: **1267.760sft** Ellip. Ht: **1176.170sft** Geoid18

Iowa North Zone (1401) Northing: **3794152.977sft** Easting: **4921508.824sft**
Mapping Angle: **0°00'02.4"** Combination Scale Factor: **0.9998979718**

IaRCS Zone 4 Northing: **8739578.287sft** Easting: **14857492.687sft**
Mapping Angle: **0°54'07.2"** Combination Scale Factor: **1.0000101900**

Monument Type: 5/8" diameter aluminum rod with a 2-1/2" dia. aluminum cap & permanent magnet encased in a 5" dia. PVC pipe with aluminum access cover.

A97-5239
RKE/JJD
10-20-97



This document was prepared by Dan Corbin, Inc. on May 25th, 2021 for Wright County, Iowa.