

**Wright County, Iowa**  
 Horizontal Datum: **NAD 83(NA2011)** - Vertical Datum: **NAVD 1988**  
 Iowa State Plane North Zone (1401)  
 Iowa Regional Coordinate System, Zone 4, Sioux City – Iowa Falls  
 Units: US Survey Feet  
**05/27/2020**

Point Name: **992001**

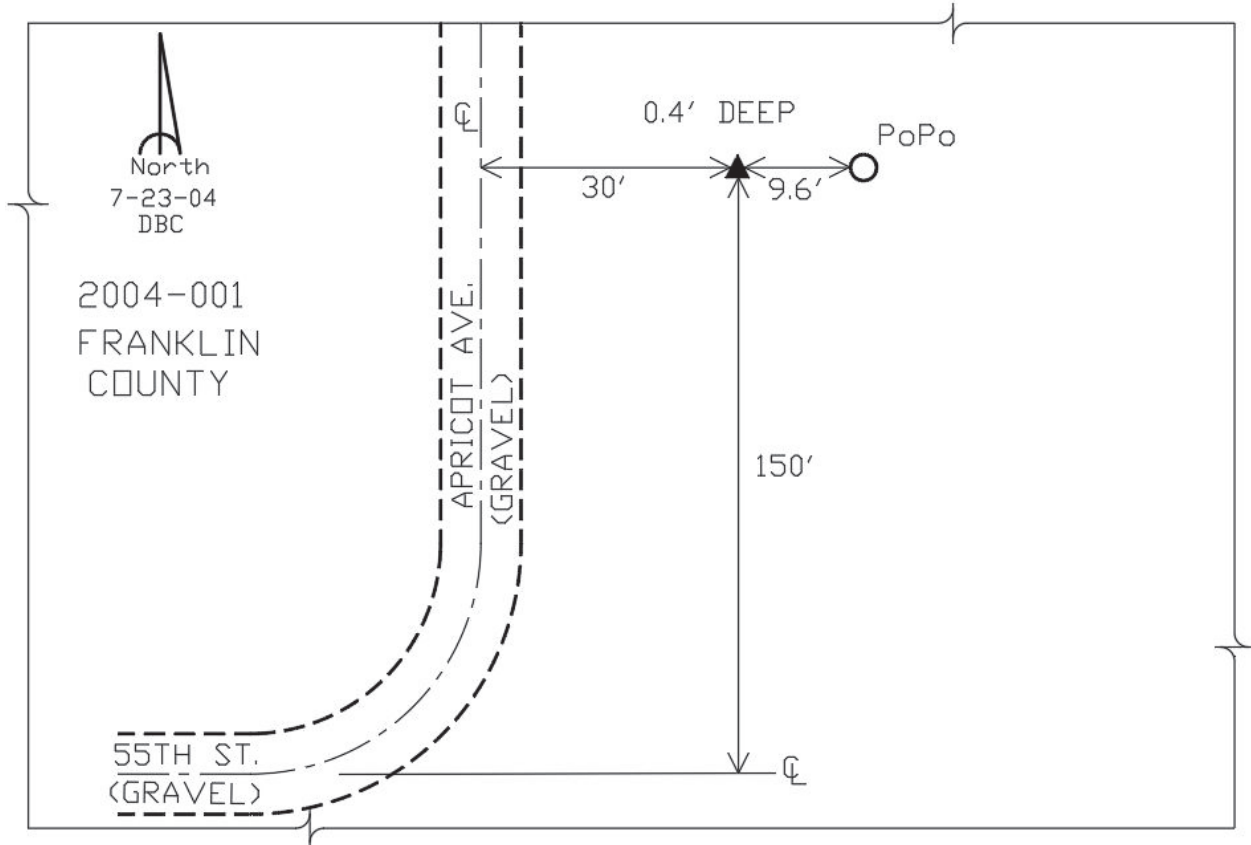
**Designation:** Franklin County 2004-001 (set by DCI in 2004)

NAD 83(NA2011) Latitude: **N42°36'31.96925"** Longitude: **W93°29'19.77002"**  
 NAVD 88 Ortho Height: **1140.817sft** Ellip. Ht: **1050.570sft** **Geoid18**

**Iowa North Zone (1401)** Northing: **3684934.859sft** Easting: **4924258.290sft**  
 Mapping Angle: **0°00'27.3"** Combination Scale Factor: **0.9998956776**

**IaRCS Zone 4** Northing: **8630405.353sft** Easting: **14861960.380sft**  
 Mapping Angle: **0°54'32.1"** Combination Scale Factor: **0.9999956474**

**Monument Type:** Bernsten Top Security Rod monument with a 2-1/2" dia. domed survey cap encased in a 5" dia. PVC pipe with a NGS style aluminum access cover.



*This document was prepared by Dan Corbin, Inc. on May 25<sup>th</sup>, 2021 for Wright County, Iowa.*