

Wright County, Iowa
 Horizontal Datum: **NAD 83(NA2011)** - Vertical Datum: **NAVD 1988**
 Iowa State Plane North Zone (1401)
 Iowa Regional Coordinate System, Zone 4, Sioux City – Iowa Falls
 Units: US Survey Feet
05/27/2020

Point Name: **993007**

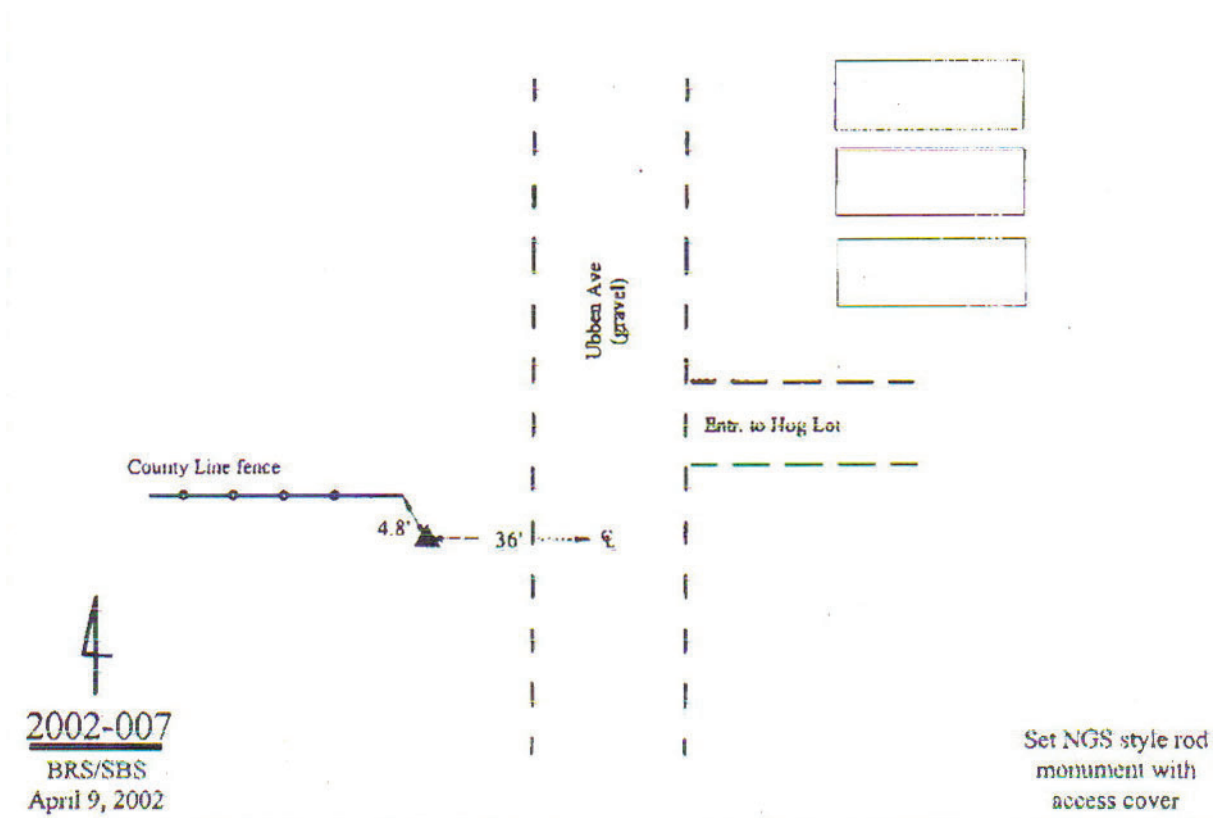
Designation: Hamilton County 2002-007 (set by ASI in 2002)

NAD 83(NA2011) Latitude: **N42°33'27.70612"** Longitude: **W93°34'40.68068"**
 NAVD 88 Ortho Height: **1175.996sft** Ellip. Ht: **1086.867sft** Geoid18

Iowa North Zone (1401) Northing: **3666291.255sft** Easting: **4900244.254sft**
 Mapping Angle: **-0°03'10.2"** Combination Scale Factor: **0.9998952520**

IaRCS Zone 4 Northing: **8611384.385sft** Easting: **14838240.271sft**
 Mapping Angle: **0°50'55.1"** Combination Scale Factor: **0.9999931357**

Monument Type: 5/8" diameter aluminum rod with a 2-1/2" dia. aluminum cap & permanent magnet encased in a 5" dia. PVC pipe with aluminum access cover.



This document was prepared by Dan Corbin, Inc. on May 25th, 2021 for Wright County, Iowa.