

**Wright County, Iowa**  
 Horizontal Datum: **NAD 83(NA2011)** - Vertical Datum: **NAVD 1988**  
 Iowa State Plane North Zone (1401)  
 Iowa Regional Coordinate System, Zone 4, Sioux City – Iowa Falls  
 Units: US Survey Feet  
**05/27/2020**

Point Name: **996025**

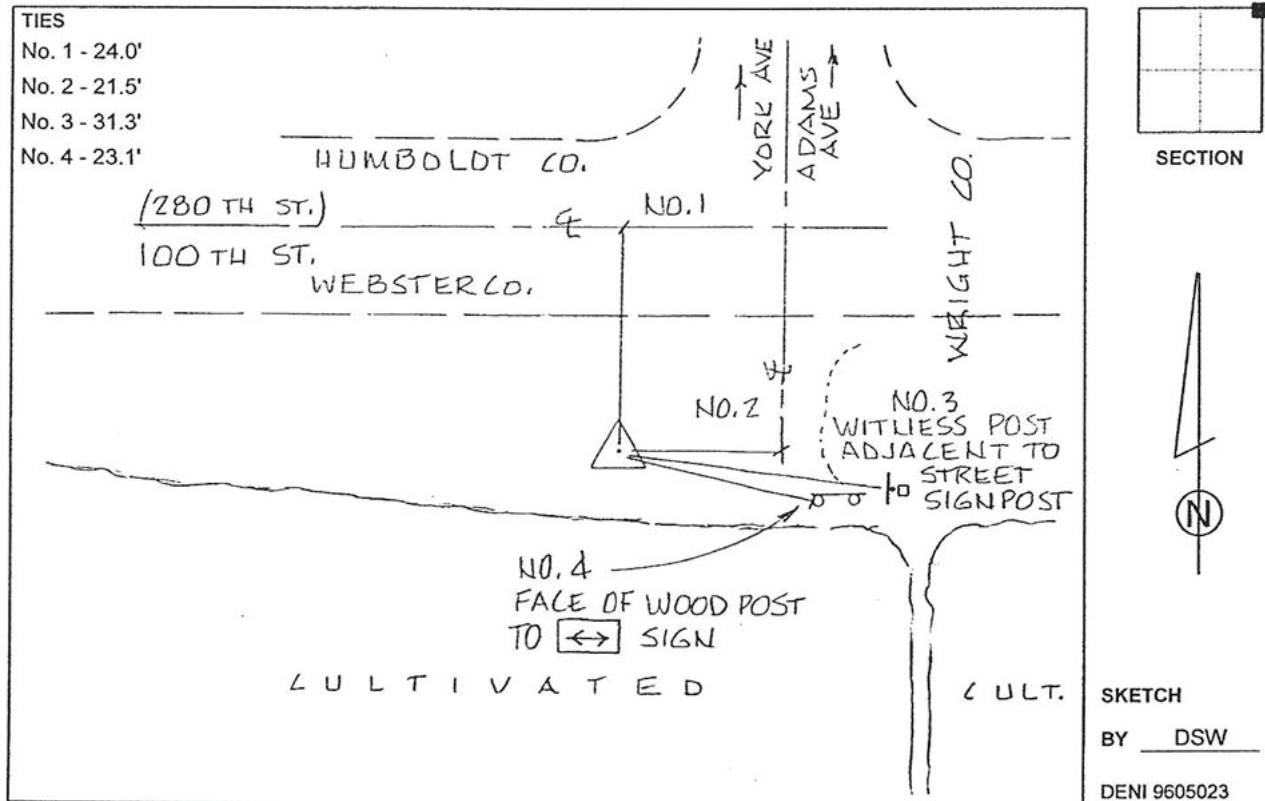
**Designation:** Webster County 6025 (set Deni Assoc. in 1996)

NAD 83(NA2011) Latitude: **N42°38'40.65391"** Longitude: **W93°58'17.14955"**  
 NAVD 88 Ortho Height: **1131.090sft** Ellip. Ht: **1039.349sft** Geoid18

**Iowa North Zone (1401)** Northing: **3698315.238sft** Easting: **4794415.025sft**  
 Mapping Angle: **-0°19'10.2"** Combination Scale Factor: **0.9998957707**

**IaRCS Zone 4** Northing: **8641741.748sft** Easting: **14731909.519sft**  
 Mapping Angle: **0°34'57.6"** Combination Scale Factor: **0.9999971982**

**Monument Type:** Bernsten Top Security Rod monument with 3-1/4" aluminum cap set inside aluminum access cover.



*This document was prepared by Dan Corbin, Inc. on May 25<sup>th</sup>, 2021 for Wright County, Iowa.*