

**Wright County, Iowa**  
Horizontal Datum: **NAD 83(NA2011)** - Vertical Datum: **NAVD 1988**  
Iowa State Plane North Zone (1401)  
Iowa Regional Coordinate System, Zone 4, Sioux City – Iowa Falls  
Units: US Survey Feet  
**05/27/2020**

Point Name: **996026**

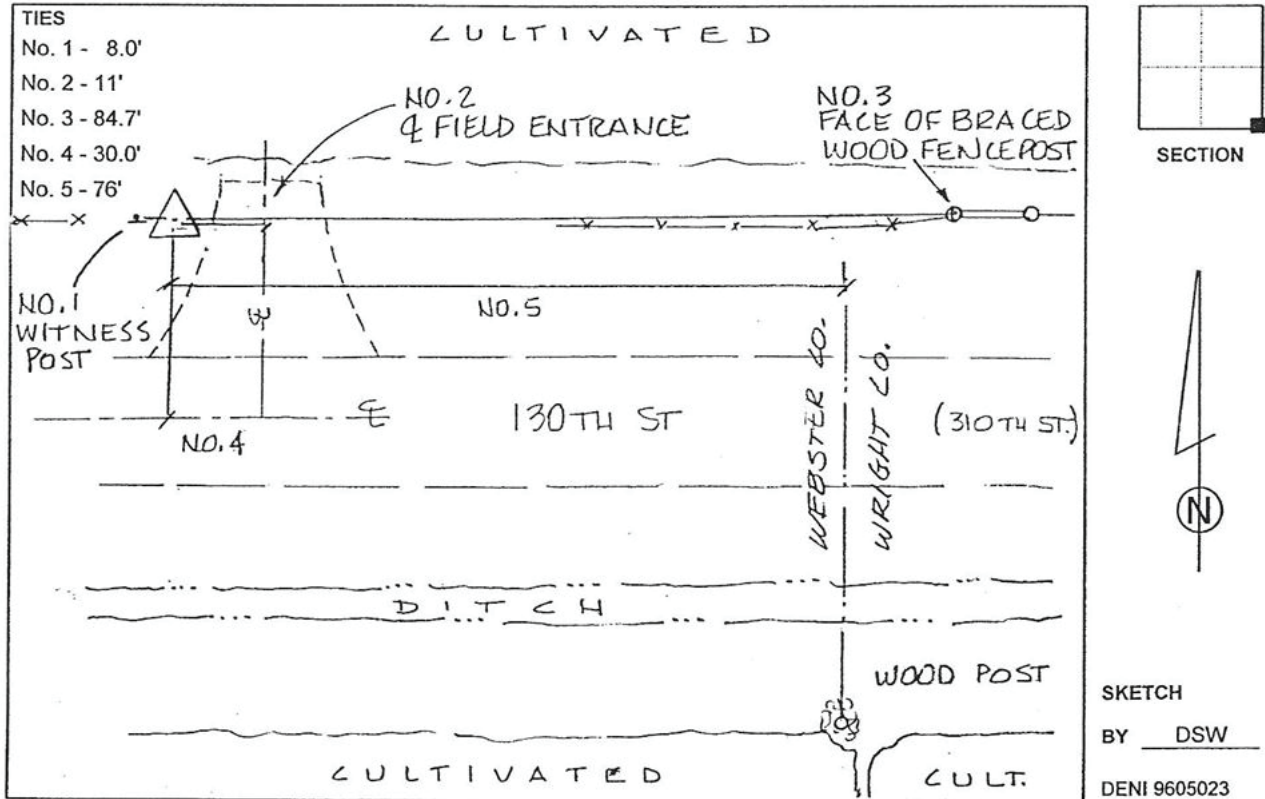
**Designation:** Webster County 6026 (set Deni Assoc. in 1996)

NAD 83(NA2011) Latitude: **N42°36'05.74132"** Longitude: **W93°58'18.21641"**  
NAVD 88 Ortho Height: **1131.723sft** Ellip. Ht: **1040.901sft** Geoid18

**Iowa North Zone (1401)** Northing: **3682633.915sft** Easting: **4794247.790sft**  
Mapping Angle: **-0°19'11.0"** Combination Scale Factor: **0.9998962776**

**IaRCS Zone 4** Northing: **8626058.159sft** Easting: **14731989.219sft**  
Mapping Angle: **0°34'56.9"** Combination Scale Factor: **0.9999959504**

**Monument Type:** Bernsten Top Security Rod monument with 3-1/4" aluminum cap set inside aluminum access cover.



*This document was prepared by Dan Corbin, Inc. on May 25<sup>th</sup>, 2021 for Wright County, Iowa.*