

**Wright County, Iowa**  
 Horizontal Datum: **NAD 83(NA2011)** - Vertical Datum: **NAVD 1988**  
 Iowa State Plane North Zone (1401)  
 Iowa Regional Coordinate System, Zone 4, Sioux City – Iowa Falls  
 Units: US Survey Feet  
**05/27/2020**

Point Name: **996027**

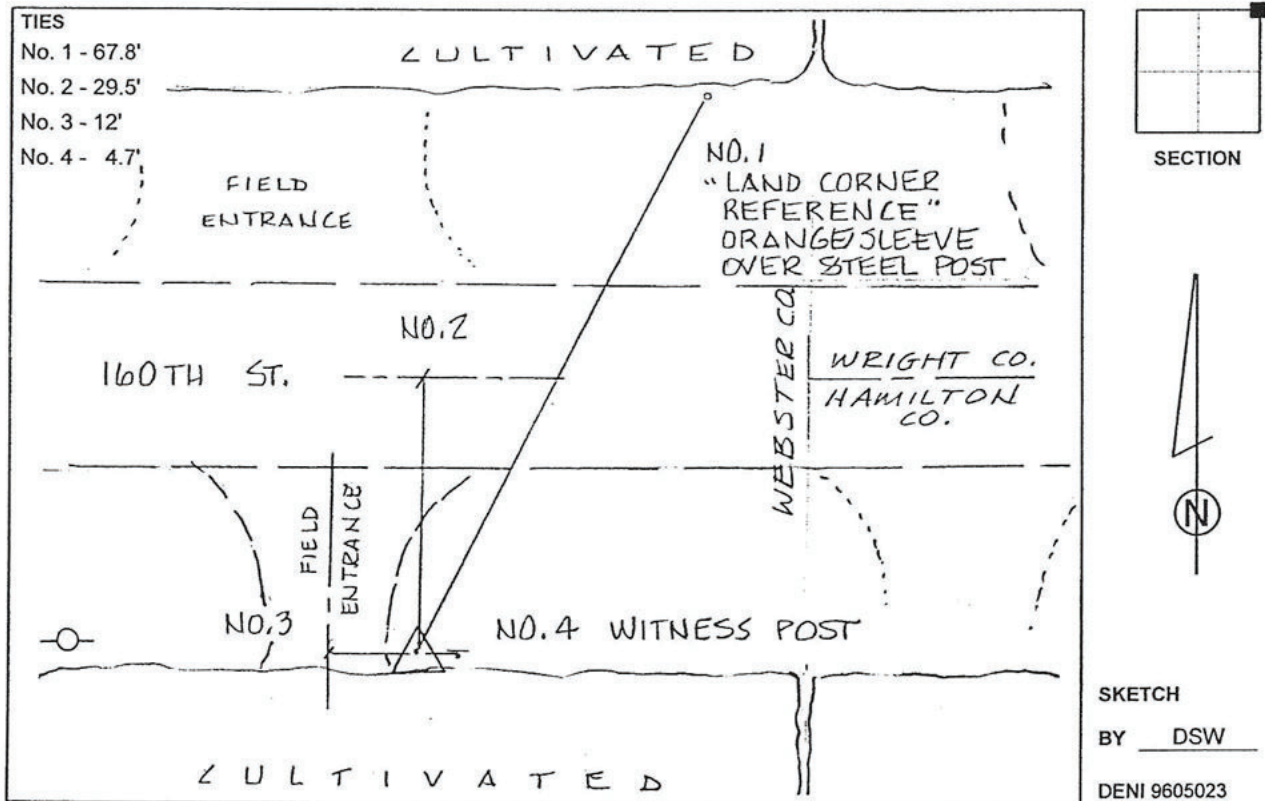
**Designation:** Webster County 6027 (set Deni Assoc. in 1996)

NAD 83(NA2011) Latitude: **N42°33'28.96516"** Longitude: **W93°58'17.72280"**  
 NAVD 88 Ortho Height: **1144.120sft** Ellip. Ht: **1054.096sft** Geoid18

**Iowa North Zone (1401)** Northing: **3666763.400sft** Easting: **4794196.173sft**  
 Mapping Angle: **-0°19'10.6"** Combination Scale Factor: **0.9998968066**

**IaRCS Zone 4** Northing: **8610187.231sft** Easting: **14732187.513sft**  
 Mapping Angle: **0°34'57.2"** Combination Scale Factor: **0.9999947048**

**Monument Type:** Bernsten Top Security Rod monument with 3-1/4" aluminum cap set inside aluminum access cover.



*This document was prepared by Dan Corbin, Inc. on May 25<sup>th</sup>, 2021 for Wright County, Iowa.*