

Wright County, Iowa
 Horizontal Datum: **NAD 83(NA2011)** - Vertical Datum: **NAVD 1988**
 Iowa State Plane North Zone (1401)
 Iowa Regional Coordinate System, Zone 4, Sioux City – Iowa Falls
 Units: US Survey Feet
05/27/2020

Point Name: **998001**

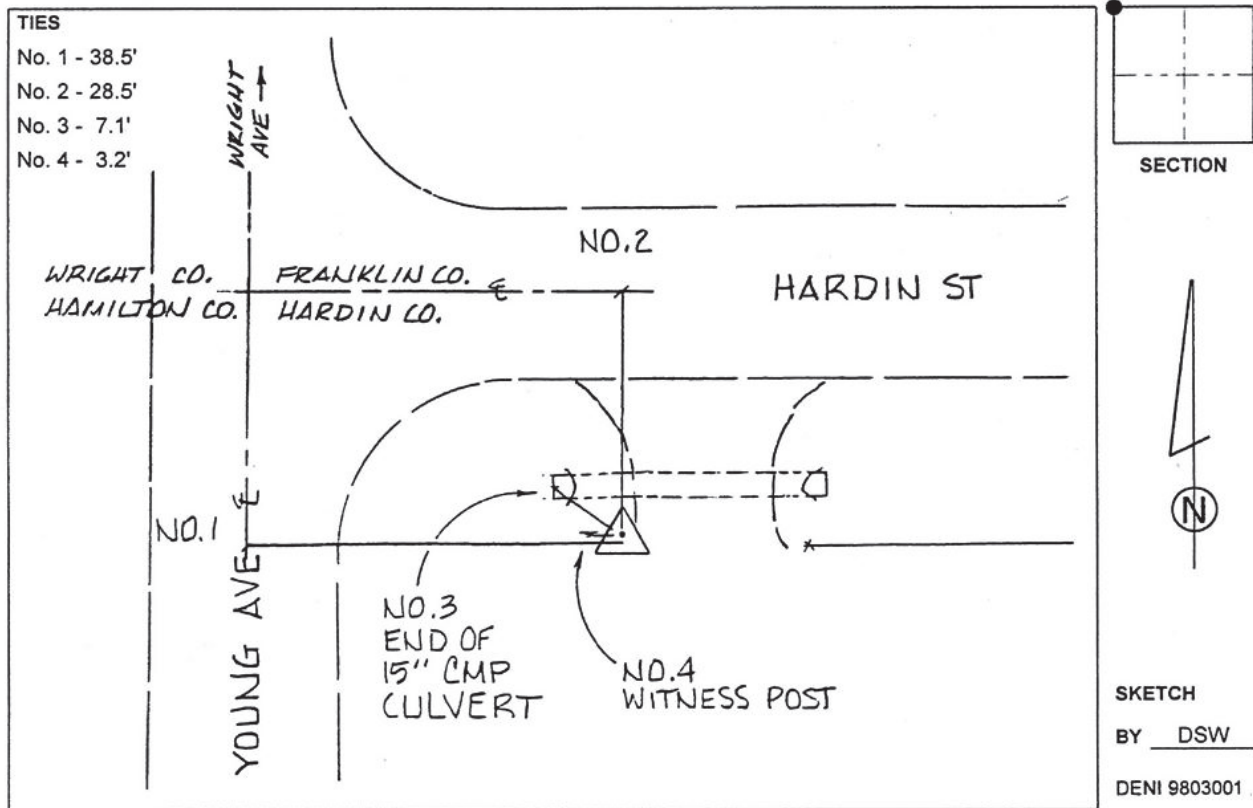
Designation: Hardin County 8001 (set by Deni Assoc. in 1998)

NAD 83(NA2011) Latitude: **N42°33'27.24315"** Longitude: **W93°29'57.73277"**
 NAVD 88 Ortho Height: **1152.600sft** Ellip. Ht: **1062.228sft** Geoid18

Iowa North Zone (1401) Northing: **3666234.703sft** Easting: **4921419.677sft**
 Mapping Angle: **0°00'01.5"** Combination Scale Factor: **0.9998964339**

IaRCS Zone 4 Northing: **8611661.002sft** Easting: **14859416.036sft**
 Mapping Angle: **0°54'06.4"** Combination Scale Factor: **0.9999943125**

Monument Type: 3-1/4" aluminum disk set in the top of a 12" diameter poured-in-place concrete monument.



This document was prepared by Dan Corbin, Inc. on May 25th, 2021 for Wright County, Iowa.