

Winter Operations KML Feeds for TV Stations

Terms of Use

By using this service, you agree to all the terms listed below and understand that non-Iowa data is provided AS IS and is not guaranteed to be accurate. You understand that non-Iowa road conditions may not match how each state displays or reports road conditions. We have attempted to map other states to the [reporting methods used by the Iowa DOT](#), but inaccuracies in terms of condition reporting should be expected since states do not correspond exactly to Iowa's methodology. You understand that this is provided to you as a service and outages may occur.

Specific Terms of Use by state: [Iowa DOT GIS Data](#) / [Iowa DOT 511 Data](#) / [North Dakota DOT](#) / [South Dakota](#) / [Nebraska DOT](#) / [Kansas DOT](#) / [Missouri DOT](#) / [Illinois DOT](#) / [Wisconsin DOT](#) / [Minnesota DOT](#)

Notes

When using Iowa DOT Road Conditions, please only credit the Iowa DOT and use the [Iowa 511 logo](#). Logos from Mesonet or Iowa State Patrol should **NOT** be used as they are not involved with reporting road conditions.

Data sources available for public consumption including, but not limited to: Iowa DOT snow plow locations, snow plow cameras, road conditions, Minnesota DOT snow plow cameras, and surrounding states' road conditions can be found on our open data site: <https://data.iowadot.gov>

Links to Individual State 511 Sites

[Iowa](#) / [North Dakota](#) / [South Dakota](#) / [Nebraska](#) / [Kansas](#) / [Missouri](#) / [Illinois](#) / [Wisconsin](#) / [Minnesota](#)

Links subject to change without notice

Questions or Comments?

Before reaching out for support, please check the following on your end to help us help you more efficiently:

- Ensure that your download process is working and the KML file has been updated in the last 30 minutes.
- Visit the [Winter Road Conditions TV directory](#) to verify that the files you're downloading (.kml) have been updated in the last 30 minutes. If they aren't, please contact the Iowa DOT GIS Team.

We are striving to ensure the static KML files are updated during your main broadcast periods (4am – 7am, 11am – 1pm, 4pm – 6:30pm, and 9pm – 10:30pm) along with rush hours during normal business days.

For all technical related questions, please contact the [Iowa DOT GIS Team](#).

For inquiries or questions related to Iowa 511, please contact [Sinclair Stolle](#) (515-239-1933).

Road Conditions Static KML Feeds

Description: This static feed was designed to improve scalability and increase speed over the alternative method. It is updated every 10 minutes on the 5's. This feed combines road conditions from Iowa, North Dakota, South Dakota, Nebraska, Kansas, Missouri, Illinois, Wisconsin, and Minnesota into one KML (current.kml) but also separates them into a KML for each respective state. Road conditions are updated approximately every 5-10 minutes during the winter season (October 15th – April 15th) and as needed during other times of the year. [Click here](#) to read how Iowa reports road conditions.

Combined URL: <https://cloud.iowadot.gov/gis/data/winterroadconditions/tv/current.kml>

Separate State URLs (if your system has issues with the combined KML):

<https://cloud.iowadot.gov/gis/data/winterroadconditions/tv/>

Separate Iowa County URLs:

https://cloud.iowadot.gov/gis/data/winterroadconditions/tv/Iowa_Counties/

Legend (with Hex Codes)

Impassable: #FF0000

 Impassable


Travel Not Advised: #660099

 Travel Not Advised

Completely Covered: #FF33CC

 Completely Covered

Partially Covered: #0099FF

 Partially Covered

Seasonal: #99CC66

 Seasonal

Data Not Available: #000001

Snow Plow Locations Static KML Feed

Description: This static feed was designed to improve scalability and increase speed over the alternative method. It is updated every 10 minutes on the 5's. This feed combines snow plow locations from Iowa, Nebraska, and Minnesota into one KML. NOTE: If the first URL only shows all plows pointed north, then you should use the legacy supported feed. Nebraska and Minnesota will always show up as "not applying material" as we do not receive material usage data from them.

URL: <https://cloud.iowadot.gov/gis/data/winterroadconditions/tv/plows.kml>

URL (Legacy support for heading): https://cloud.iowadot.gov/gis/data/winterroadconditions/tv/plows_legacy.kml

Legend

Plow (Not Applying Material):



Plow (Applying Solid Material):



Plow (Applying Liquid Material):











Plow (Applying Liquid & Solid Material):



Iowa 511 Events

Description: This feed includes Iowa 511 high-priority events and crashes. It is updated every 10 minutes on the 5's. There will be times when there is no data in this file.

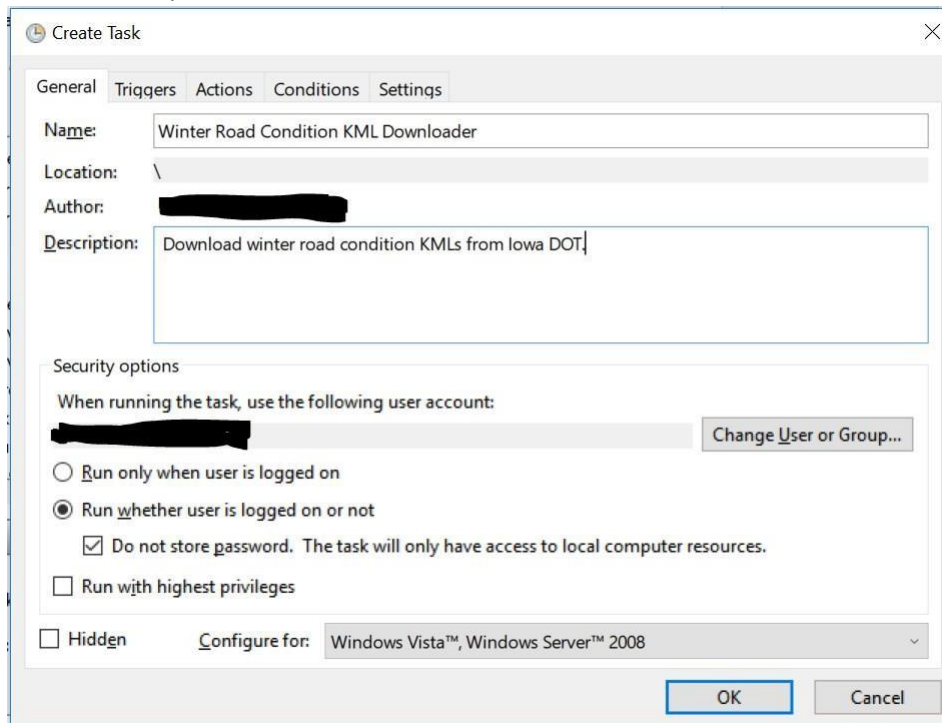
URL: <https://cloud.iowadot.gov/gis/data/winterroadconditions/tv/IA511MediaEvents.kml>

	Critical Disruption	Standard
Complete Closure		
Warning		
Info		
Lane Closure		

Saving the KML locally (Optionally if required)

NOTE: The following steps only work on a machine running Windows.

- 1) Save the [WRCDownloader.zip](#) file to your machine and extract it.
- 2) Move the WRCDownloader.ps1 to a location on your machine accessible by your software.
(C:\WinterRoadConditionsKML\
 - a. The WRCDownloader script is set by default to download the current kml road condition. You can easily update it to pull from the alternative method or other files.
- 3) Open up Windows Task Scheduler.
- 4) Click "Action" -> "Create Task"
- 5) On the **General tab**: Set a name, description and then check "Run whether user is logged on or not" and check "Do not store password"



- 6) On the **Triggers tab** create a new trigger by clicking "New" and setting your settings to the ones below and then selecting "OK".
 - a. Begin the task: **On a schedule**
 - b. One time Start: Any time. We update the current.kml every 10 minutes between 5-6 minutes, so if you set it to 1:08:00 AM, you should get the latest KML.
 - c. Repeat task every: **10 minutes** for a duration of: **Indefinitely**
 - d. Stop task if it runs longer than: **5 minutes**
 - e. Check Enabled
- 7) On the **Actions tab** create a new action by clicking "New", setting the options to the ones below (modify the path to the WRCDownloader, and then click "OK").
 - a. Action: Start a program
 - b. Program/script: Powershell.exe
 - c. Add arguments: -ExecutionPolicy Bypass C:\WinterRoadConditionsKML\WRCDownloader.ps1

8) Set the **settings tab** to the following and then click "OK".

The screenshot shows the 'Create Task' dialog box with the 'Settings' tab selected. The dialog has a title bar with a close button (X) and a subtitle 'Create Task'. Below the title bar are four tabs: 'General', 'Triggers', 'Actions', and 'Settings'. The 'Settings' tab is active, and the main area contains the following options:

- Allow task to be run on demand
- Run task as soon as possible after a scheduled start is missed
- If the task fails, restart every: minute
- Attempt to restart up to: times
- Stop the task if it runs longer than: minute
- If the running task does not end when requested, force it to stop
- If the task is not scheduled to run again, delete it after: days

Below these options, it says 'If the task is already running, then the following rule applies:' followed by a dropdown menu set to 'Do not start a new instance'. At the bottom right are 'OK' and 'Cancel' buttons.